



HARTFORD HUNDRED WEST  
THE

# PARISH MAGAZINE



*Bayford, Brickendon, Essendon,  
Little Berkhamsted & Ponsbourne.*

**Dec  
2024**

**Group Woodyard:**

We are well stocked with top  
quality logs. Order your logs  
now for the winter.  
Call **Colin 07540 351 530**



Price  
**80p**



## DIOCESE OF ST. ALBANS



**The Bishop of St Albans:** The Rt. Revd. Dr. Alan Smith  
**The Bishop of Hertford:** The Rt. Revd Jane Mainwaring  
**Archdeacon:** The Venerable Janet Mackenzie .  
**Rural Dean:** The Revd. Mark Dunstan  
**Assistant Rural Dean:** The Revd. Ysmena Pentelow

### THE PARISHES OF BAYFORD & BRICKENDON, LITTLE BERKHAMSTED, ESSENDON & WOODHILL, PONSBOURNE:

**RECTOR: Rev'd Theresa Musiwacho,**

Hartford Hundred Rectory,

1 Little Berkhamsted Lane, Little Berkhamsted, SG13 8LU.

Telephone: 01707 875940 email - hartfordhundred@outlook.com

*Communion to the sick, Notice of Banns and of Marriage by arrangement with the Minister. See p4.*

*Please advise us of any cases of sickness so that prayers may be offered  
or where they may be of any assistance.*

#### **ST ANDREW'S - LITTLE BERKHAMSTED**

##### **CHURCHWARDEN**

Sandie Ash, Hall Cottage, 7 Church Road,  
Little Berkhamsted, SG13 8LY **01707 875221**

##### **PCC SECRETARY**

Ian Bailey, Tower House, Stockings Lane,  
Little Berkhamsted. SG13 8LW **01707 875971**

##### **TREASURER**

Christopher Nunn, Trewinnard House, Little  
Berkhamsted, SG13 8LS **07885 464055**

##### **ORGANIST**

#### **ST MARY - BAYFORD and HOLY CROSS and ST ALBAN - BRICKENDON**

##### **CHURCHWARDEN**

Mr C Taylor, Baybury House, 41 Ashdene  
Road, Bayford, Hertford, SG13 8PX  
**01992 511041**

##### **PCC SECRETARY**

##### **TREASURER**

Mrs. L. Fitzjohn, Home Farm, Bayford Lane,  
Bayford

##### **ORGANIST**

Mrs V Haryott, Wellpond Cottage, Brickendon,  
SG13 8NU **01992 511575**

#### **ST MARY THE VIRGIN - ESSENDON and WOODHILL, AL9 6AS**

##### **CHURCHWARDENS**

Paul Wombwell, 27 Rectory Close, Essendon,  
AL9 6HG **01707 273729**

Colin Rees, 2, Letty Green, Hertford,  
SG14 2NZ. **07540 351 530.**  
colin4444@yahoo.com.

##### **PCC SECRETARY**

Ms C Blackman, 42 High Road, Essendon,  
AL9 6HW 07831 341886  
casblackman@yahoo.com

##### **TREASURER**

Mr Nick Pickard, Cucumber Hall, Essendon,  
AL9 6JB 07779 325847

#### **ST MARY - PONSBOURNE**

##### **CHURCHWARDEN AND TREASURER**

Phil Ryan  
50, New Park Road, Newgate Street,  
SG13 8RF - **01707 876151**  
phil.ryan47@gmail.com

##### **ORGANIST**

Mr P Minchinton, 14 Byfield, Welwyn Garden  
City, AL8 7AL **01707 323742**

##### **PARISH MAGAZINE EDITOR**

Dr M E Wainwright. 12 Church Road, Little  
Berkhamsted, SG13 8LY. **01707 875970**  
parishmag@begesford.co.uk

The Parish Magazine is also available online, free of charge.  
Google 'HHW Parish Magazine'.  
For the HHW web site Google 'Hartford Hundred West'.

## Rector's Article.

**D**ear All  
I am quite sure that many of the Services and Events such as, Get together Church & Community gatherings, Celebratory events, Confirmation and Remembrance Service that we have held or been part of over this year as Hartford Hundred Group, may not have happened had it not been for the love of Jesus in us.

Of course, we have had challenging times - the deaths of the loved ones in the community and some laments etc, but the cry of the heart has also drawn some of us closer to each other and to God.

The Christmas message of the birth of Jesus Christ brings hope to many. Hope is such a principal force to hold on to in times of uncertainty. Looking back, during pandemic in the lock down period, I remember how anxious I felt when my son was writing his examination in his bedroom, because all students were sent home from university. He would wake up at night and start writing before the given hours were over. I remember waking up at night anxious that he might forget and checking if he was up. Most parents who were in the same situation can resonate with me. The only way I could settle was to place my hope on Jesus Christ.

In the bible hope is tantamount with trust. Placing everything at the feet of Christ and trusting that He will meet us at our point of need as individuals.

There are times when it seems like your world is falling apart and hope has deserted you, the only option is to place your problem at the feet of Jesus. In Mark 2:3-5, four men carried their paralysed friend to Jesus. There was not even room at the door where Jesus was but these friends, in hope, tore the roof off the house to get their friend at the feet of Jesus. Hope in Jesus does not disappoint. Their friend was healed.

May you find hope in the fact that God knows what is best for you and the right time. Also put your trust in Him and be certain beforehand that any outcome by God is the right one. Sometimes it might not be the one you are hoping for but you will see why with time. From experience sometimes it can take years for you to understand how and why God used tragedies, certain events or setbacks in your life. If you trust in God, it is enough to know that He will use whatever comes your way for your good. That is the reason why we can have hope in Jesus even in the darkest moments.

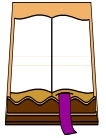
May the message of hope in Jesus this Christmas give you all encouragement, inner strength and the reason to keep going. Remember- He is alive.

Merry Christmas to you all!  
Rev'd Theresa Musiwacho



**Prayer Share.** Almighty Father, whose will is to restore all things in your beloved Son, the King of all: govern the hearts and minds of those in authority and bring the families of the nations, divided and torn apart to be subject to his just and gentle rule; who is alive and reigns with you, in the unity of the Holy Spirit, one God, now and for ever. Amen

# PARISH REGISTER



## Confirmation

3<sup>rd</sup> November 2024 Alan SPRINGETT Brickendon

## Deaths

18<sup>th</sup> October 2024 Barbara BRAMLEY Essendon  
24<sup>th</sup> October 2024 Angela Jessie VENABLES Essendon  
28<sup>th</sup> October 2024 John Robert BEDWELL Ponsbourne  
8<sup>th</sup> November 2024 Mary Sheila FLOUNDERS Essendon

---

## DECEMBER CALENDAR

### **Sunday 1<sup>st</sup> December, First Sunday of Advent**

9:30 am, Parish Communion, Essendon  
11:00 am, Parish Communion, Brickendon  
4:00pm Christingle Service, Ponsbourne.

### **Sunday 8<sup>th</sup> December, Second Sunday of Advent**

9:30 am, Parish Communion, Bayford  
11:00pm Christingle Service, Little Berkhamsted.  
3:00pm Christingle Service, Essendon

### **Sunday 15<sup>th</sup> December, Third Sunday of Advent**

9:30 am Parish Communion, Ponsbourne  
11:00 am Family Service, Brickendon.

### **Sunday 22<sup>nd</sup> December Fourth Sunday of Advent.**

9:30am Parish Communion, Bayford.  
3:00pm Nine Lessons and Carols, Little Berkhamsted  
6:30pm Nine Lessons and Carols, Essendon  
6:30pm Nine Lessons and Carols, Ponsbourne

### **Tuesday 24<sup>th</sup> December, Christmas Eve**

4:30pm Crib and Christingle Service, Bayford  
11:15pm Midnight Parish Communion, Essendon  
11:15pm Midnight Parish Communion, Ponsbourne

### **Wednesday 25<sup>th</sup> December, Christmas Day**

9:30am Parish Communion, Little Berkhamsted  
10:15 am Family Service, Ponsbourne  
11:00 am Family Service, Brickendon  
11:00 am Family Service, Essendon

### **Sunday 29<sup>th</sup> December, First Sunday after Christmas.**

10:15 am, Group Communion, Brickendon

## Wednesdays

9:30 am, Parish Communion, Essendon  
10:00 am, Telephone Service Free

For Joining instructions see  
[hartfordhundred@outlook.com](mailto:hartfordhundred@outlook.com)

## Just One Fence Left to Jump ...

before the run in to the finishing line, with the crowd going wild willing their chosen mount to the winner's enclosure.

It was only last month that we reported that there were still two fences to overcome if the Parish Magazine were to have a future beyond the end of this year, but we are delighted to report that one of these has been successfully hurdled. Following a chance meeting at 'The Rector's Tea Party', Jane Oram, of the Parish of Essendon, offered up her services in filling the role of Hon Treasurer, assuming the role from myself. Her offer has been gratefully.

With Jane's appointment and Cas Blackman shadowing our current Editor, as he pulls together the last edition for 2024, duly supported by our invaluable proof readers, the new production team is now complete and ready to take the magazine forward into the New Year.

However, it is this final hurdle that is proving most challenging – that of Distributor within the Essendon Parish. Shirley Christison has given invaluable service over the past twenty-five years and now wishes to pass on the baton to another resident within the village. Beside personally delivering to approximately half of the current subscribers within the village, Shirley has a network of sub-distributors to support her in servicing the other fifty residents. Should you wish to learn more about what is involved in contributing to parish life, feel free to give Shirley a call on 01707 261437.

Whilst all the subscribers in the other parishes will be kept abreast on the comings and goings within their respective villages, Essendon recipients will be unaware as to just what they are missing out on. So close, yet so far – your parish needs you, whoever you may be!

---

**Editorial.** I have greatly enjoyed my time as Editor. It gave me a chance to write about subjects which are of interest to me, and hopefully to others, and also to share photographs. It gave me an excuse to spend time editing photographs to focus on the important part of the scene. It has also given me an opportunity to meet and correspond with so many people within the Group. There are so many good people in our parishes who give up hours of their time and energy in the cause of HHW. These are difficult times for The Church. Nationally: to misquote Henry II, "Thank God someone has rid us of this terrible priest.". Locally: There are churches in Hertfordshire and elsewhere where the congregation is increasing. It is not a lost cause. Doing more of the of same is not going to fix things. 'God helps those who help themselves'. A radical reassessment is required. Contact must be made with these thriving churches to find out what they are doing that is making them successful.

Thank you everyone who included such kind words in their emails. I wish everyone in the Group the very best wishes for 2025. MW

# LITTLE BEES MUSIC CLASSES

FOR 0-4S AND THEIR GROWN-UPS!

[www.katieneilsonmusic.org/little-bees](http://www.katieneilsonmusic.org/little-bees)



**DELIVERIES OF WELL AGED, TOP  
QUALITY LOGS  
ARE AVAILABLE NOW TO HELP  
YOUR CHURCH!**

Our stocks of first grade logs in predominantly ash but encompassing lots of slow, hot burning woods are yours with one call. Logs are varied sizes to suit smaller grates as well as more average. Your contributions go without deductions to your local church.

**Please call Colin on  
07540 351 530.**

Order early as deliveries are made in strict order. Colin Rees

## Magazine Message to you all,

On behalf of the Church, the Community and myself, I extend heartfelt gratitude to our long serving outgoing Magazine Editor Mike Wainwright, Treasurer Peter Chivers and Team Members, who, over many years, have each faithfully contributed their time and dedication. Your commitment to serving our community has strengthened our bonds and delivered inspiration, stability, and information to most people.

To our new Editor, Cas Blackman, Treasurer, Jane Oram, Judy Rennie and Team Members, we welcome you warmly and look forward to seeing the unique gifts you bring to these roles as we journey forward together. May God's grace be with each of you, guiding and blessing this transition.

Reverend Theresa Musiwacho

## **Bridleway 18 - Modification Order Update. Little Berkhamsted.**

The Planning Inspectorate's public local inquiry is set to start on  
**Tuesday 10<sup>th</sup> December 2024 at Priory Hall, Ware Priory,**  
High Street, Ware SG12 9AL at 10 am

Visit <http://www.gov.com> and enter ROW/3311608 the information is under the Hertfordshire tab with relevant dates for any submissions.

For more information please contact the Parish Council via  
[clerk@littleberkhamsted.org.uk](mailto:clerk@littleberkhamsted.org.uk)



*in the*  
**COMFORT and SAFETY**  
*of your own home.*

**Hair by Liz**

**07809446786**

**Liz Wainwright**

**Over 25 years Experience**

**Fully Insured**

**All Equipment Sterilised  
Cuts, Blow-dry, Sets, Perms**

**Specialising in Colour and  
Extensions**

## **Angela Venables**

It is with sadness that the ladies of Essendon WI heard of the death of Angela Venables on Thursday 24<sup>th</sup> October. Until poor health forced Angela to retire from her role as President in 2023, she had held this position for over 25 years joining the Institute in 1964. In the early 80's the Institute disbanded due to dwindling membership and when it reopened in 1989 Angela was instrumental in encouraging ladies from the village to rejoin and recruiting many more. Since that day It has been due to her dedication, perseverance and tireless work that members gather regularly each month with interesting speakers, holding special events and charity work.

Barbara, our Vice President and Treasurer shares a few personal notes:

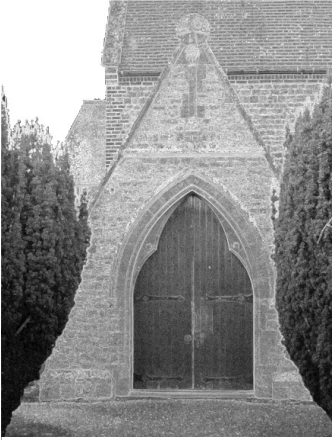
“Angela has been our neighbour and friend since we moved to Essendon 24 years ago. When Inga Wright retired, I managed to surprise her by knocking on her door and asking to take on the Treasurer's role. Always strong and supportive, she was also pleased when we could also help with the growing need for computer communication. She never got into that.”

Angela will be very much missed for her remarkable contribution to the WI and the Horticultural Show over the years, for her wise counsel and her kindly attitude to everyone she met.

### **Weddings, Baptisms and other matters.**

**Saturday Registration** is held on the 1<sup>st</sup> and 3<sup>rd</sup> Saturdays of each month at 10.00 am to 11.30 am in Little Berkhamsted Church.

No appointment necessary



# Bayford

## St. Mary's Church

Bayford Church is open **Sunday, Wednesday** and **Saturday**.

**CHURCH CLEANING**

**FLOWERS**

### **BAYFORD PARISH COUNCIL**

To read the minutes and agendas just Google '*Bayford Parish Council*' and follow the link to '*Minutes*'.

#### **The Old Playground.**

Gavin Nelson continues to update us on the progress as Bonnel Homes. The new house is now well underway

#### **Meetings.**

Please check the web site.

Michael Wainwright (Dr),  
Chairman.

**pc@begesford.co.uk**

01707 875970.

[www.begesford.co.uk](http://www.begesford.co.uk)

Below are the new email addresses for Bayford Parish Councillors. I have set these up so that Parish Council business and information are kept separate from personal emails. In recent months politicians and others have come under fire for using personal emails and What's App accounts etc for Council business.

Whilst we do not handle the level of information that, for example, Hilary Clinton did, we nevertheless would be liable if information gained in the course of carrying out PC business was passed on or used for other purposes.

There is also a new web site under construction:

[bayfordparishcouncil.org.uk/](http://bayfordparishcouncil.org.uk/)

### **New PC email Addresses.**

**boborme@bayfordparishcouncil.org.uk**

**chrisorme@bayfordparishcouncil.org.uk**

**alanfitzjohn@bayfordparishcouncil.org.uk**

**clerk@bayfordparishcouncil.org.uk**

**oliverriley@bayfordparishcouncil.org.uk**

**mikewainwright@bayfordparishcouncil.org.uk**

**georgerowley@bayfordparishcouncil.org.uk**





### Friends of the Baker Arms

Due to the change of government, the scheme which we hoped would provide funding, (COF) has been discontinued.

We have made an Expression of Interest application to the Lottery Heritage Grant Scheme but this was turned down. We will now have to consider the next step, which will probably be to revise our Lottery application and try again.

McMullens have put forward a pre-application which the Parish Council has been asked to comment on.

Please follow, like and share on social media for all the latest campaign news.

[www.friendsofbakerarms.org](http://www.friendsofbakerarms.org)  
[hello@fiendsofbakerarms.org](mailto:hello@fiendsofbakerarms.org)

### **Caroline Fletcher**

Caroline has left the village. I am sure we would all like to thank her most heartily for her many roles over the years, most recently, with the Bayford Knitters, and to wish here every happiness in her new home. MW

### **From Desne Nicholls**

I rehome some hedgehogs ready for release back into a safe habitat from Shepreth Hedgehog Hospital. They have asked if I could pass on this link <https://bighedgehogmap.org> which monitors where hedgehogs are sighted. Currently no hedgehogs from Bayford have been put on this website (I believe it is a fairly new one and probably most people are unaware of it) and obviously it would help the cause if there is a clearer picture of the Bayford hedgehog population.

Place Farm, Bayford Green  
01992 511765

### **Bayford CofE Primary School & Nursery**

Due to a recent change to their constitution Bayford CofE Primary School & Nursery have a vacancy on their Board of Governors. We would like to appoint a local person with a real interest in young people and their education. There would be between 6 and 12 early evening (5pm) meetings to attend per year. If you are interested in school governance and think you could support this thriving village school please contact the Chair of Governors (01992 511551) for a chat.



## **Knit N Natter at The Farmer's Boy**



We have said a sad goodbye to Caroline Fletcher who started the group as she starts a new adventure in Devon. We all wish her and her family good luck.

We have been busy making hats and rainbows for rainbow babies born at Lister hospital.

We are now making items for the Christmas tree festival and the postbox toppers in Bayford and Brickendon.

We meet on the 1<sup>st</sup> and 3<sup>rd</sup> Wednesday at The Farmer's Boy Brickendon. Contact Janet 07795 963531 for more information.

## **A Message from Anne Mitcheson**

Over these last ten years the kind but gently firm hands of Michael Wainwright, and Peter Chivers, together with Judy and Sue, has meant that the Parish Magazine of the Hartford Hundred West Group of Parishes has continued to be a support to so many in all sorts of different ways.

Communications between us all have altered so much and the elderly and housebound, in particular, have worried about keeping up to date. They need not have worried! The effects of COVID and all that resulted from it, on all ages, has changed our lives in so many ways but the constant standards and regularity of the monthly Parish Magazine has been a reassurance to so many.

The magazine contributors have regularly contributed the necessary details vital to so many of us in our daily lives along with many interesting and entertaining articles about so many different subjects and this brings us all together.

The Magazine has brought together a very good team who themselves, in their different ways, have also attracted advertisements and new contributors. The benefit of all of this has been a 'coming together' of people, new friendships made, help quietly given where needed and long may this continue. It is also good news of a continuation of the Parish Magazine in whatever form it takes and again a lovely compliment paid to the team's work!

Anne

# Isabel Hospice Mobile Donation Points



The Dutch Marketplace  
Monday 16<sup>th</sup> December 10am – 2pm



Check the magazine out online in colour.

**Scan the QR code.**



**PLUMBING & HEATING SPECIALISTS**

**01992 554941 | 07769 356310**

[enquiries@ambientheatingsolutions.com](mailto:enquiries@ambientheatingsolutions.com)

[www.ambientheatingsolutions.com](http://www.ambientheatingsolutions.com)

**Natural Gas, LPG & Oil  
Fully Insured**

**Rated excellent on Trustpilot**



It's Easy. On your phone, go to settings and find camera. There should be an option 'Enable QR Scan' or similar.

Then open your camera, select photo and then move the phone so that the QR code fills the screen. The browser should appear. Tap on it and it will display the Mag

# Cucumber Fields



## CUCUMBER FIELDS

CUCUMBER LANE | ESSENDON

### CYCLE CLASSES

CYCLE YOUR WAY TO GOOD HEALTH



#### HEALTH BENEFITS

- Improves heart and lung function.
- Strengthens muscles.
- Improves blood flow.
- Boosts a positive mood.
- Improves sleep.
- Lowers the risk of heart disease, hypertension and diabetes.
- Brings social connections to likeminded locals.



#### POWER UP CYCLE

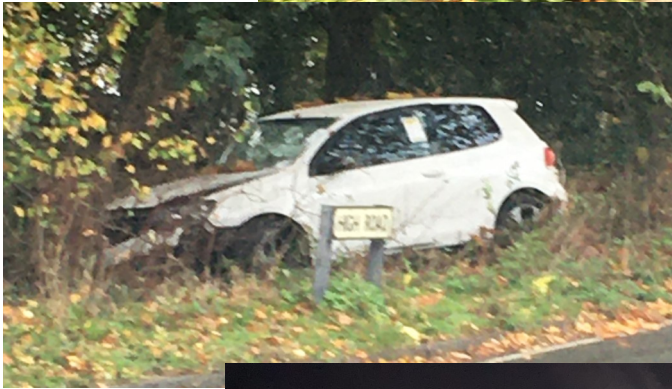
A dynamic workout combining music and resistance training for a fun cardio workout. This 45 minute class is designed to boost strength and endurance.

#### ZENCYCLE

Experience the ultimate mind & body connection with this signature class. Enjoy a steady 30-minute ride to ambient, feel-good music, encouraging you to focus on your breath and the present moment. Stepping off the bike onto the mat for grounding yoga stretch. This low-impact cardio is excellent for fat burning and releasing endorphins throughout your body and mind.

Book via [hello@cucumberfields.co.uk](mailto:hello@cucumberfields.co.uk) or scan the QR code to view our class timetable and book via our website.

A couple of weeks ago two cars ran off the road at the S bend, opposite Essendon Country Club, within days of each other,



Moonrise over Little B Church, with vapour trails.

photo: SueW





# Brickendon

## Chapel of the Holy Cross & St. Alban

For enquiries concerning the Chapel, please contact **Virginia Haryott 01992 511575** or email [wellpondharyott@gmail.com](mailto:wellpondharyott@gmail.com)

**December Services.** Please see page 4 for a full list of services.

Sunday 1<sup>st</sup> December 11.00am Parish Communion  
Sunday 15<sup>th</sup> December 11.00am Family Service  
CHRISTMAS DAY 25<sup>TH</sup> Dec. 11.00am Family Service

	<b>Flowers</b>	<b>December</b>	<b>Cleaning</b>
29 <sup>th</sup> November	Amanda Davey		Alison Blakey
6 <sup>th</sup> December	“ “		“ “
13 <sup>th</sup> December	Virginia Haryott		Polly Shipton
20 <sup>th</sup> December	“ “		“ “
27 <sup>th</sup> December	“ “		“ “

**Please consider volunteering for either Church cleaning or flower arranging as it would help lighten the load for all the existing hard workers!**

Contact Virginia on 07770944854 or email [virginia.haryott@gmail.com](mailto:virginia.haryott@gmail.com)

**Unfortunately, there has been no interest in the vacancy for a Treasurer in Brickendon/Bayford PCC.**

Our present treasurer, Lorna Fitzjohn, stated she wanted to resign last Christmas but has kindly carried on all this year to fill the gap. PLEASE consider taking on this role. You do not need to be a PCC member or a regular church goer – just someone who could volunteer their help for a few hours each month. Lorna would be pleased to explain what is involved. Please phone her on 075838996 ([lorna.fitzjohn@gmail.com](mailto:lorna.fitzjohn@gmail.com)) or Virginia Haryott 07770944854 ([virginia.haryott@gmail.com](mailto:virginia.haryott@gmail.com)) (see page 17)

## Tennis Courts.

The fee for hire is still £5 per court per hour. The courts are in excellent condition and we like to see them being used, there is also a pavilion for changing in.

To book a court please telephone 07734 715002 or email [tony.roberts@brickendon-liberty.org.uk](mailto:tony.roberts@brickendon-liberty.org.uk)

**Pilates** - Every Tuesday morning in Fanshaws Room (the village hall) at 9.15am, to register contact **Harriet Barton, 07944 500504** or [pilateswithharriet@hotmail.com](mailto:pilateswithharriet@hotmail.com)

**Book Club** - meets every first Tuesday of the month at 8pm, contact **Andrea Trendler for venue - 01992 511588**

## Parish Council Meetings

Meetings are normally held in the Fanshaws Room at 7.30pm and all parishioners are welcome to attend and to raise any issues of concern. Agendas are posted on noticeboards at least 3 days before the meeting.

### Parish Council meetings 23<sup>rd</sup> January 2025

Parish Clerk: Laura Brooks-Payne  
Brickendon Liberty Parish Council  
PO BOX 81, Knebworth, SG3 6YZ

Email [clerk@brickendon-liberty.org.uk](mailto:clerk@brickendon-liberty.org.uk)  
Mobile 07803 906291

**Minutes:** Brickendon website  
[www.brickendon-liberty.org.uk](http://www.brickendon-liberty.org.uk) for .

## Brickendon Petanque Boules Club

We play at The Farmers Boy  
Sunday 10am - 12noon  
Tuesday 5.30pm - 7pm  
Thursday 10am - 12noon

We have a full and active summer programme and new players are always welcome, boules can be borrowed from the club hut.

For further information contact our Club Secretary **Janet 01992 51151**



### Knit N Natter at The Farmer's Boy

**Brickendon Knit N Natter meet every Tuesday in The Farmer's Boy from 10am until 12 noon.**

**We are a very friendly and welcoming group. Some people knit, some crochet, some sew, some natter and some knit natter.**

**If you want to learn how to knit or crochet we can help you just come along on a Tuesday morning and join us.**

**Some of the group have been making the postbox toppers keep a look out for the next one.**

**For more information contact Janet 01992 511515.**

## Bayford War Memorial



The Bayford War Memorial is different from many in that it is made from Clipsham Stone. This is a type of sandstone quarried near Peterborough. The quarry is still active.

Many memorials are made from the white Portland stone.

I haven't been able to find out when it was erected. It was presumably financed by the parish and the Clinton Baker family sometime around 1920.

The base has a roundel of St George and a crucifix stands on top. The crucifix is quite well preserved for its 100 years up there.

### AMV CHIMNEY SWEEPS



Traditional Chimney Sweep with brushes, fireplace sealed and advance vacuum technology Used

Inglenooks, Wood burning stoves, Aga/solid fuel stoves. Gas fires, cowls fitted, smoke testing, certificates issued. Tel:07815 502798.

email  
amvchimneysweeps@googlemail.com  
web [www.amvchimneysweeps.co.uk](http://www.amvchimneysweeps.co.uk)

Certified member of the Institute of Chimney Sweeps

### Evergreen Landscapes

All aspects of Garden Construction undertaken.

Approved Patio and Driveway Contractors

Walling, Pathways, Turf and Lawn Installers, Fencing, Natural Stone and Porcelain Specialists  
Grounds Maintenance Contractors for Private or Commercial Properties

Office **01707655511**

Mobile call Ron on **07747841103**

Email:-

[sales@evergreenlandscapes.co.uk](mailto:sales@evergreenlandscapes.co.uk)  
ALL WORK GUARANTEED

**Evergreen**  
landscapes



Please mention HHW Parish Magazine when responding to an advert.

## Bayford and Brickendon Parish

Would you like to support your wonderful local churches?  
Have you got a few hours to spare each month?

### **St. Mary's Bayford and Holy Chapel Brickendon are seeking a new Treasurer,**

as our present Treasurer is retiring in June. It would be possible to have one Treasurer for each church.

The PCC meets three times a year and has an annual meeting when the accounts for the previous year are presented.

The role is voluntary and includes paying bills, managing bank accounts, and producing the annual accounts which are examined by an independent accountant.

The Treasurer does not have to be experienced as a handover will be provided. The weekly collections and fundraising money are paid into the bank by the churchwarden.

For more information or to arrange a chat with the current Treasurer about the role, please contact:

Lorna on 07582538996 (lorna.fitzjohn@gmail.com) or  
Virginia on 07770944854 (virginia.haryott@gmail.com)



HCPC Registered Audiologist  
Ear Wax Removal, Hearing Assessments,  
Hearing Aids & More

25 St Andrew Street, Hertford, SG14 1HZ  
01992 877666 hertfordhearing@outlook.com

Essendon

# Essendon, Woodhill, Wild Hill & Woodside

St. Mary the Virgin



## Flower Arranging.

December

Advent no flowers

24<sup>th</sup> Pam Worsley

31<sup>st</sup> Pam Worsley



Services. See page 4.

## All Sorts Dementia Group.

Social and activity group for people with mild to moderate dementia starting at Essendon Village Hall every Wednesday 10.30am till 3pm. Spaces limited so please call

**01279 498938** or

email [allsortsdg@gmail.com](mailto:allsortsdg@gmail.com)  
for more information.

Website: [www.allsortsdg.co.uk](http://www.allsortsdg.co.uk)

## The Village Hall.

Tel: 07442 499601

email:

[essendonvillagehall@hotmail.com](mailto:essendonvillagehall@hotmail.com)

[facebook.com/essendonvillagehall](https://www.facebook.com/essendonvillagehall)

[essendonvillagehall.wixsite.com/](http://essendonvillagehall.wixsite.com/)

[essendonvillagehall](http://essendonvillagehall)

## Bible Study

All are welcome.

More information and dates from

[mckellartrish@gmail.com](mailto:mckellartrish@gmail.com)



## Essendon Toddlers

The Baby and Toddler group meets in Essendon on Friday mornings, 10-11.30 in St Mary's Church room (just to the side of the St. Mary's Church).

If you have or look after a baby or toddler and want to meet up, why not come along and join us?

All are welcome.

There is no charge although in the future we may ask for a contribution for tea and coffee! Any questions please message [mandynevel@gmail.com](mailto:mandynevel@gmail.com)

## ESSENDON W.I.

Please call Lyn McCash **07971 909540** if you would like to become a member of Essendon WI or attend future speaker evenings as a guest.



### Essendon Nature Notes

I am not sure whether the poor Christmas carol which bears their name has fostered my dislike for holly and ivy or whether I don't like the rather unmelodic hymn because it reminds me of these troublesome plants. I recently pulled some ivy away from the brickwork and having taken some mortar with it I remembered why it is not a favourite of mine. Given the chance, it finds its way into every nook and cranny. Having had to fight my way past its partner in crime, the holly bush, to get to the ivy and suffering a few bloody scratches for my troubles I have had my fill of the two of them for the time being.

However in my more reflective moments I do have to allow for the fact that these are native plants which make a major contribution to the local ecology. As evergreens they provide shelter all year round and are valuable nesting sites in the spring. Ivy in particular is important for our butterflies and moths and provides food when there is not much else about. Indeed the majority of pollen collected by honey bees in the autumn is from ivy and the calorie-rich berries



are a valuable lifeline for the birds in the later winter months.

As native species they have a central place in our folklore and originally holly was thought to be the male plant and ivy the female. In Celtic mythology the Holly King rules for half of the year passing his crown to the Oak King at the winter solstice. It is not surprising that the holly bush also came to be part of the Christian tradition with its spiky leaves echoing the crown of thorns alongside the blood-red of the berries. So perhaps I should learn to tolerate them and recognise their importance, if not their beauty, and celebrate the help they give to our birds and bats and bees. Maybe. As for that carol, maybe not... DC

## Gardening in December

Winter is a very good time to plant Apple and Pear trees while they are dormant and can be bought as 'bare root' trees which are much easier to handle. Think carefully where you are going to put them so they have sufficient space, and shelter from strong winds etc.. Planting should be straightforward. Dig a suitable hole making sure that the graft join is above soil level and, in windy spots, add a good supporting stake. This is also a good time to put in new Raspberry canes. In advance prepare and enrich the planting area using well watered garden compost, plant them at least 1 metre apart with 1.5 metres between the rows and add more compost in the years ahead. If you enjoy Rhubarb similar action can be used but don't harvest until the second Spring. Following on from this try starting other new shrub cuttings from long woody stems and you won't need any special equipment apart from a sharp pair of secateurs, containers, compost and pots. Prune the cuttings to 6-8 inches and label in case you forget what they are! Good watering is essential - remember that they certainly all won't succeed, don't be disappointed but enjoy the ones that do!

Dahlia tubers absorb a lot of goodness from stems and leaves during the Autumn as they continue to swell in size until the first frosts kill off top growth. Taking them up too early can weaken them but I tried leaving them in place last winter and sadly none re-appeared this Spring so I will take them up this time!! With your 'cut' Christmas tree this year it is recommended that for a 'cut' tree take it home as soon as you like BUT leave it outside as long as you can and cut off whilst it is outside a small piece off the stem so that it can easily absorb any water.

A few hints learnt over the years on what to look for when shopping for plants! Always look for plants that are putting on growth and not showing yellowed or damaged leaves. Check for 'unwanted visitors' including both sides of the leaves, avoid plants with weeds growing on the compost surface as they have been about for some time and haven't had much attention and do check that the labels are accurate!

Germander Speedwell.

**The lighting of the  
Essendon Christmas tree**  
on  
**Thursday 12<sup>th</sup> December @ 7pm ,**  
Essendon village hall ,  
all are welcome there will be  
Christmas carols, mulled wine, kids  
drinks,  
mince pies, and stollen.

Ian Venables



## Essendon Parish Council

December's meeting is scheduled for Tuesday 10<sup>th</sup> December; there will be two

local police officers in attendance at this meeting to discuss the issue of speeding in the village. The following meeting will be held on Wednesday 15<sup>th</sup>

January, where parish councillors will be joined by County Councillor

Stephen Boulton and Welwyn and

Hatfield Borough Councillor, Mark

Short to answer residents' questions.

Members of the public are encouraged

to attend. Agendas will be available on the PC website,

[www.essendonparishcouncil.gov.uk](http://www.essendonparishcouncil.gov.uk)

and on noticeboards in the village.

Minutes of all meetings are also available on the website. Please email the Clerk (Caroline Chapple) with any comments/enquiries at:

[clerk@essendonparishcouncil.gov.uk](mailto:clerk@essendonparishcouncil.gov.uk)

Caroline Chapple, Clerk

[clerk@essendonparishcouncil.co.uk](mailto:clerk@essendonparishcouncil.co.uk)



### HERTFORD TV SERVICE

**Please call: 01992 552955**

- AERIALS & SATELLITE INSTALLATIONS/REPAIRS
- TV REPAIRS (OLED, LCD, LED)
- TV WALL MOUNTING & SOUNDBARS
- WIFI SYSTEMS & DATA NETWORKING
- CCTV & WIRELESS BURGLAR ALARM SYSTEMS
- STARLINK INSTALLATIONS

[www.hertfordtvservice.co.uk](http://www.hertfordtvservice.co.uk)  
Unit 1B, Foxholes Avenue, Hertford SG13 7JG  
LOCAL FAMILY BUSINESS EST 1979  
ALL WORK FULLY GUARANTEED

### Tennis Courts

The prices are

£50 family,

£30 individual and

£15 for a junior.

New members always welcome.

To join the club or any questions please contact,

**Nicki Whitelaw 07946300512**

**[nicki.whitelaw@sky.com](mailto:nicki.whitelaw@sky.com)**

Essendon Tennis Club Committee

### **Essendon Connect**

has been providing free coffee, tea and cake in Essendon for over three years and held its third birthday party this month. Essendon Connect was started to continue the friendly support network that developed in the village during the covid epidemic and lock downs. We meet every Friday morning from 9.30 - 11.30 in the village hall - and all are welcome. We are supported by the Parish Council, the Village Hall Committee and various donations including from the Community Development Association and from Stephen Boulton, WHC & Hertfordshire Counsellor.

### Volunteers are requested for the **Annual leaf clear and churchyard tidy**

at Essendon.  
Saturday,  
7<sup>th</sup> December  
starting at 10 AM.

Please come and help us with the annual spruce up in the village churchyard. Thank you.



### **FRIENDS OF ST MARY'S ESSENDON** **The CANDLELIT CHRISTMAS SUPPER**

will be held in the Church  
at 7.00 pm for 7.30 pm on

**SATURDAY 14<sup>th</sup> DECEMBER**

**\*\*\*PLEASE NOTE THE NEW DATE\*\*\***

We unfortunately indicated the wrong date in the October edition

with entertainment  
Tickets are available  
but are limited

Tickets at £20 including a glass of mulled wine  
Bank Payment or cheque to Friends of St Mary's Essendon

Sort : 60-10-39 A/c 30401682

Ref Candlelit Supper

if you prefer to pay cash, please  
contact **Mandy Nevel 07967500289** or  
**Hilary Pickard 07974231206**



If you have specific requests for Table Plan - contact Judy Rennie 01707 658322  
Please contact us if you have dietary requirements. It is not always possible to accommodate on the night!

Please mention HHW Parish Magazine when responding to an advert.

## Professional carpet, rug & upholstery cleaning

Stain & odour removal  
Scotchguards  
Fully insured, Free quotes.



## Window, conservatory & UPVC cleaning

Tel: 01992 586004  
Mob: 07958 729074  
[www.dharriscleaning.co.uk](http://www.dharriscleaning.co.uk)



### **St Elizabeth's School and College cares for children and young adults with special needs.**

The School is a centre of expertise in supporting and educating young people with moderate or severe learning difficulties (MLD/SLD), profound and multiple learning difficulties (PMLD) or other complex neurological conditions potentially caused or complicated by epilepsy. Our Multi-Disciplinary Teams, in partnership with Great Ormond Street Hospital, equip the School to serve a wide range of complex needs such as Attention Deficit Hyperactivity Disorder (ADHD), language and communication needs or challenging behaviours.

Supporting pupils to make progress and develop independence skills is at the heart of everything we do, providing a safe and caring environment in which they can achieve their fullest potential.

[fundraising@stelizabeths.org.uk](mailto:fundraising@stelizabeths.org.uk)



## CUCUMBER FIELDS

Thank you to everyone who has visited our Award Winning Wellness Sanctuary this year.

We have thoroughly enjoyed building new friendships and sharing the space with more of our wonderful neighbours.

We wish you a happy and healthy festive season and look forward to meeting more of you in 2025.

Clare, Pip & all the Cucumber Team

[www.cucumberfields.co.uk](http://www.cucumberfields.co.uk)

**ghp**

CUCUMBER FIELDS  
YOGA STUDIO OF THE YEAR  
**Fitness &  
Nutrition Awards**  
WINNER 2024



LONDON & SOUTH  
EAST ENGLAND  
PRESTIGE AWARDS  
2023/24

2024  
**WINNER**

BUSINESS  
AWARDS **UK**

**Sports and Leisure Awards**

► Yoga Studio of the Year

Cucumber Fields



Christmas Greetings from our Advertisers.



**Annette Tyler at The HR  
Dept. Hertford and Hatfield**

wishes all readers a very Happy  
Christmas and a prosperous New  
Year

**Laurel Cottage, Howe Green,  
Herts  
SG13 8LH  
01992 721629**

[annette.tyler@hrdept.co.uk](mailto:annette.tyler@hrdept.co.uk)  
[www.hrdept.co.uk](http://www.hrdept.co.uk)



**Oakland Gardens**

We would like to say a very  
big thank you to all our  
customers for their  
continued support and  
custom this year.

We wish you all a wonderful festive  
season and a very happy, healthy  
and peaceful new year.

**Les and Michael Swain**



## Remembrance Service St Mary's Essendon 2024

The Remembrance Sunday Service for the Hartford West group of Parishes was held on Sunday 10<sup>th</sup> November at St Mary the Virgin at Essendon and was well attended. This service is part of the national remembrance of the service and sacrifice of all those who fought in the armed services to protect our freedom and way of life, particularly those who lost their lives as a result of fighting in the First and Second World Wars and other conflicts.

The church bells were rung in advance of the service by the Essendon Bellringers. Bells are rung half muffled in mourning for funerals and other solemn occasions such as Remembrance Day, or to mourn the passing of the old year before the New Year is rung in. To half muffle bells a leather pad is tied to one side of the ball of each bell clapper so that alternate strikes of the clapper are softer (an eerie echo). Bells are only rung fully muffled on the death of a monarch as they were after the death of Queen Elizabeth II in 2022.

On Sunday the choir, clergy, churchwardens, Parish Council representatives and congregation, some of them wearing their medals, processed to the village war memorial for the national two minute silence, prayers and appropriate words of remembrance, and the Last Post and Reveille. On return to the church there was a service of hymns and prayers and the names of those who died from all our villages in the two World Wars were read by their parish representative. The service was well attended and was led by Rev Theresa Musiwacho. The preacher was Rev Iain Lane. After the service, with coffee and biscuits, there was an opportunity to socialise.



# The Play And Stay Den

**Wednesday & Friday Mornings**

**9am-11am**

**£8 Entry Per Adult & Child**

**(£4 Per Additional Child)**

**Includes-**

**Free Hot Drinks/Water**

**Free Snacks/Fruit**

**Cash Only**

**Ages 0-5**

**Baby Area**

**Toddler Area**

**Soft Play/Bouncy Castle**

**Messy Play**

**Opening Week- 6th November & 8th November**

**Little Berkhamsted Village Hall**

**SG13 8LY**





# Little Berkhamsted, Howe Green & Epping Green St. Andrew

## CHURCH CLEANING

7<sup>th</sup> December Sandie Ash and  
Diane Stanbrook

21<sup>st</sup> December Margery Bailey

## Services for December

Dec 8<sup>th</sup> 11am Christingle service  
Dec 22<sup>nd</sup> 3pm Nine lessons and Carols  
Dec 25<sup>th</sup> 9.30am Parish Communion

## Wellbeing Class

Every Monday at 10am St Andrew's Church.

Come along and learn how to keep yourself healthy and well.

For more details call Beverly on 07989181847 everyone welcome.

## Baby Group

**Every Tuesday 10-11.30am**

Very casual so feel free to pop in and say hello. All babies and toddlers are welcome with parents, grandparents, and carers. Contact; Sandie Ash 01707 875221

**The Church is  
open every day.  
So, pop in and see  
what is going on.**

## CHRISTMAS MAGIC

Friday 6<sup>th</sup> December 6pm  
The Christmas lights and the Stable Nativity will be on at 6pm.

We are also having a competition for the best child and adult **Christmas jumper, a Christmas raffle, Music in the church**, Christmas songs and carols for everyone to join in.

**Refreshments**, mulled wine, mince pies, hot chocolate and more.

**We wish everyone a safe and peaceful Christmas.**

# Master Art Workshops

We are delighted to welcome renowned, inspirational artists and craftspeople to teach in our lovely rural location.

**Release your inner creativity and join us for fun**

**Sue would like to thank all who have taken part in her courses over the past year , wish them a Merry Christmas and all the best for 2025.**



<http://www.masterartworkshops.com> or  
email [suewilliams021@aol.com](mailto:suewilliams021@aol.com)

Follow us on social media to keep up with our news -  
Facebook page is <http://www.facebook.com/masterartworkshops> and  
instagram page is [@masterartworkshops](https://www.instagram.com/masterartworkshops)

## The Nightingale's Song

It started in May with a nightingale I didn't see  
but imagined would come back one day.  
Along the way I looked for the key  
To how we used to be.

Time stretched out, the village and the land  
Leaves me in no doubt  
What it is about and where we stand,  
The track, the trickle of the sand.

I pick up my pen and map out the year,  
On St Stephen's day my father's wren  
And then, hold back a single tear  
But the past speaks to me, I have no fear.

As the night dresses the silent owl's wing  
It never tells me if I will see tomorrow's light  
Or if my heart's desire the dawn will bring,  
And hear again the nightingale sing.

DC

## News from Little Berkhamsted Parish Council

The next meeting of the Parish Council is on **Wednesday 15<sup>th</sup> January 2025** at 7.30pm in the Village Hall. The Agenda is published on the website and village noticeboards the week before the meeting and residents are welcome to send questions to the clerk beforehand, [clerk@littleberkhamsted.org.uk](mailto:clerk@littleberkhamsted.org.uk) or attend the meeting and ask in person.

### Can you help us?

The Parish Council would like help from residents of the village. We are collecting photos of interest of the village from over the years. Please send any photos to the clerk

### The Community Café

Friday morning in the Cricket and Community Pavilion from 10am – 12 noon. Come along and enjoy coffee, cake and conversation.

### Vacancy

Little Berkhamsted Parish Council currently has a Vacancy for a Parish Councillor. This is a rewarding voluntary role in which you can really make a difference in your village. To obtain more information or to apply for the position, please contact: [clerk@littleberkhamsted.org.uk](mailto:clerk@littleberkhamsted.org.uk) or phone 07803 906291.



In France The Lions Organisation attaches these notices to disabled parking places.

**“If you take my space, also take my handicap”**

## Little Berkhamsted Community Facilities for Hire

The Village Hall has recently been insulated and redecorated. It has disabled access and toilet, a fully equipped kitchen for any refreshment needs, a table tennis table, internet access and projector equipment.



The cricket and community pavilion has a fully equipped kitchen, bar area, changing rooms and shower facilities.



Hire Charges (per hour): Little Berkhamsted Resident: **£12** Other: **£17**

For further details contact: Sandie Ash 01707 875221  
or [clerk@littleberkhamsted.org.uk](mailto:clerk@littleberkhamsted.org.uk)



Please mention HHW Parish Magazine when responding to an advert.



**WEST & SONS**  
FUNERALS

INDEPENDENT FAMILY RUN  
FUNERAL DIRECTORS

**Here for you at your time of need**  
**Professional Services with**  
**Personal Care**

Bespoke Funeral Plans	24 Hour Service	Private Chapel of Rest
--------------------------	--------------------	---------------------------

**01992 260 800**  
info@westsfunerals.com  
www.westsfunerals.com  
110 Fore Street, Hertford SG14 1AB



**The Doom Stone, York Minster.**

This shows the 'naughty people' being boiled in a cauldron whilst the devil's helpers look on. 12<sup>th</sup> century.

## JAMES ROBINSON

- ◆ ◆ PLANT HIRE
- ◆ ◆ GROUNDWORKS
  - ◆ ◆ PAVING
  - ◆ ◆ DRIVEWAYS
  - ◆ ◆ LANDSCAPING
- ◆ ◆ SEPTIC TANK INSTALLATION
- ◆ ◆ SITE CLEARANCE AND PREPARATION
  - ◆ ◆ DEMOLITION

Please call to discuss your needs

**07860 445203**

admin@j-robinson.co.uk  
www.j-robinson.co.uk





Please mention HHW Parish Magazine when responding to an advert.



**Steve Gibson**  
Painter and Decorator

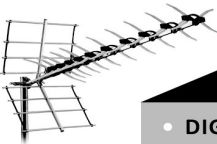
Home: 01707 875285  
Mobile : 07733428447

Fully insured  
References available



Internal decorating only

Stevegibson2013@gmail.com



## HERTFORD TV SERVICE

Tel: 01992 552955 [www.hertfordtvservice.co.uk](http://www.hertfordtvservice.co.uk)



MEMBER

- DIGITAL FREEVIEW AERIAL INSTALLATIONS
- EXTRA TV POINTS and SKY PLAYBACK
- AERIAL REPAIRS and STORM DAMAGE
- DAB/FM AERIALS and COMMUNAL TV SYSTEMS
- FREESAT HD, SKY+HD and SKY Q
- HIDDEN DISH SPECIALISTS and FOREIGN SATELLITE
- PLASMA/LCD/LED TV, AUDIO and DVD REPAIRS
- TV WALL INSTALLATIONS and HIDDEN CABLES
- WIRELESS BURGLAR INTRUDER ALARM SYSTEMS
- CCTV SYSTEMS IN FULL HD – WATCH ON YOUR TABLET OR SMART PHONE ANYWHERE IN THE WORLD
- WIFI ACCESS POINTS and DATA NETWORK DISTRIBUTION
- SONOS and HOME CINEMA AUDIO SPECIALISTS
- VIDEO DOOR ENTRY and INTERCOM SYSTEMS

UNIT 1B, FOXHOLES AVENUE, HERTFORD SG13 7JG  
LOCAL FAMILY BUSINESS ESTABLISHED 1979 • ALL WORK FULLY GUARANTEED

# MITCH

## PLASTERING & DECORATING

Professional, Reliable,  
Quality  
and  
Clean Service

Over 20yrs experience,  
Fully Insured

Please Call Chris on 07775  
673423

Scouts **THE 1 NORTHAW** Scouts  
**SCOUT GROUP**

Both our **Beaver Colony** (6-8 years) and **Cub Pack** (8-11 years) have resumed "normal" activities including hiking, camping and learning new skills and having great fun.

The numbers in both Sections are growing and we would love to welcome new members. We would also be really happy to have more adult helpers and leaders to support this. Beavers meet on Thursday and Cubs on Monday.

Meetings are based at our Headquarters in Northaw Village.

To find out more contact Gordon Marshall at

[gordon.marshall@pscouts.org.uk](mailto:gordon.marshall@pscouts.org.uk)

## ROY FRITH VACUUM CLEANER SALES, SPARES & REPAIRS

RECONDITIONED APPLIANCES

**01992 503991**

13 TALBOT  
STREET  
HERTFORD  
SG13 7BX



## Music Classes

for 0-4s and their grown ups

- Songs, dances, rhymes
- Puppets and instruments
- Specialist teacher
- Siblings discounts
- Great music! Loads of fun!

[www.katieneilsonmusic.org/little-bees](http://www.katieneilsonmusic.org/little-bees)

*Come and enjoy the fun!*

Please mention HHW Parish Magazine when responding to an advert.



achievephysio  
relieve • restore • improve

**Ian J Johnston**  
BSc(Hons) MCSP MAACP  
Chartered Physiotherapist HCPC Registered

## PHYSIOTHERAPY

In Brookmans Park

Clinic, home or work place

Tel: **07702 871780**

[www.achievephysio.co.uk](http://www.achievephysio.co.uk)

[info@achievephysio.co.uk](mailto:info@achievephysio.co.uk)




## Oakes Restoration

*Repairs to Fine Antiques  
And Contemporary Furniture  
French Polishing, Spray Finishing,  
Cabinet Making and Design, Veneering, Boule Work,  
Leather Lining, Marquetry, Re-upholstering,  
Caning and Rushwork, Carving and Turning,  
Clock Restoration, Clock Servicing,  
Repairs to Metal Artefacts, Quality Fabric Sales.*

*All work guaranteed to the  
highest standards. Established 1991.*

David Oakes  
01992 511251 / 07860 954977





# Newgate Street

Ponsbourne St. Mary

**Village Coffee  
Morning  
2<sup>nd</sup> December  
10am to 12 noon  
at  
The Crown**

## Church Open

for  
**prayer and quiet contemplation,**  
every **Wednesday 9:30 to 12:30.**

## VILLAGE HALL BOOKINGS

All bookings can now be made through the Village website

[www.newgatestreet.org/](http://www.newgatestreet.org/)

Follow the link to Hall Rental and Book the Hall .

## Book Exchange.

**A BIG THANK YOU** for the donation from the **BOOK EXCHANGE** which continues to run at the **Post Office** in Newgate Street Village Hall on Tuesday, Wednesday and Thursday mornings .



## What's On in Newgate Street

**Table Tennis:** Tuesday evenings 7.30 - 9.30pm in the Village Hall. £1 pay and play

**Tennis** - Tuesday mornings 9.30-10.30am Village Courts. Term time only. Contact 07710 507 215

**Book Swap** - Pre read books to buy £1 or swap 50p, in the Village Hall Post Office Tuesday & Thursday mornings.

**Village Chat** - WhatsApp group for people living in the village. To join the group contact 07710 507 215

**Village Pub Social** - 8pm the second Friday of every month in either The Crown or The Coach & Horses Pubs, come along to meet friends and make new ones. See Village Chat WhatsApp group or Village website for details.

### Post Office.

A small Post Office is open on Tuesday and Thursday mornings in the village hall.

## GARDENING

### Do You:

NEED a strong pair of hands for those gardening jobs  
NEED your vegetable garden dug.  
NEED your grass/hedges cut  
NEED logs moving/splitting  
NEED terraces or garden furniture pressure washed.  
NEED shed or fences painted.



### Then I am your man!

Time to suit, 7 days a week.  
Please ring Paul Curson **01707 875622**, £12 per hour .  
Minimum 2 hours.  
(£14 if using own machinery)  
Transport required  
I do not use mains electrical hedge cutters or mowers.

### Change of time.

#### **Christmas Morning Service at St. Mary Ponsbourne from 11am to 10.15am**

A Huge 'Thank You' to Sandra, Kevin and Family for organising our recent Newgate Street Village Jumble Sale, as well as all those who helped with the set-up, manned the laden tables, served the tea, coffee and delicious home-made cakes to the throngs of eager, generous customers !

The sale raised the Magnificent sum of £1,312.31 which will boost St. Mary's Church Funds for our planned projects.....

## **P.W. Electronics**

**For supply and installation of your new digital equipment  
Repair of T.V. Video recording equipment, DVD and Hi Fi.**

Sales Service & Rental

**Paul Wombwell**

**01707 265546 (Essendon)**

email [pwelectronics@btinternet.com](mailto:pwelectronics@btinternet.com)

## Local Shops, Services and Pubs



**EMMIE MURPHY'S  
VILLAGE STORE**



**CHURCH ROAD, LITTLE BERKHAMSTED**

Locally Grown Fruit and Veg. when available. Braughing Sausages. Locally Made Apple Juices. Local Bread, Cakes and Fresh Cream Cakes. Fresh Flowers. Locally Made Jam, Marmalade and Honey. Local Farm Eggs and Duck Eggs delivered daily. Wines. House-ware. Confectionery. Newspapers and Magazines.  
**Muriel's Home-made Pickles. Dr. John Dog Food.**

Delivery Service now available throughout the Local Villages  
**HOURS:- Mon-SAT. 7am-6pm. Sun 8am-4pm**  
**01707 878731**

Please mention HHW Parish Magazine when responding to an advert.

## **I & B ELECTRICAL**

**Domestic & Commercial  
Electrician**

- Rewires
- Fuse Boxes
- Security
- Extra Sockets
- Lighting Points
- Smoke Detectors
- Electric Cookers
- TV Points
- Phone Points
- Ring video doorbells
- Tidy & Efficient



**30 YEARS EXPERIENCE**

**Tel: 01707 262771**  
**Mobile: 07861 398288**

*Family run business*

*info@ib-electrical.co.uk*

*www.ib-electrical.co.uk*





## NEED A WINDOW CLEANER?

*Dirty Windows?*

Excellent standards guaranteed or your money back!  
Contact us direct for a list of services provided or visit  
our Website or Facebook Page:



Will: 07737 375618

[gleamteamwindowcleaners@outlook.com](mailto:gleamteamwindowcleaners@outlook.com)

[www.gleamteamwindowcleaners.com](http://www.gleamteamwindowcleaners.com)

[@gleamteamwindowcleaners](https://www.facebook.com/gleamteamwindowcleaners)

## OAKLAND GARDENS

## L & M SWAIN

### GARDEN MAINTENANCE

ALL TYPES OF GARDEN WORK UNDERTAKEN

INCLUDING

REGULAR MAINTENANCE AND ONE OFF TIDY UPS

HEDGES CUTTING

TURF LAYING

FENCING

PRUNING

PRESSURE WASHING

PATIOS LAID



TELEPHONE: 01992 511343, 0794 1398 510

Please mention HHW Parish Magazine when responding to an advert.



Ponsbourne St Mary's Church  
Newgate Street Village

# Christmas TREE FESTIVAL

29 November to 01 December 2024

Friday 29 November	Saturday 30 November	Sunday 01 December
School Opening Service at 2pm	Open viewing 12pm to 6pm	Open viewing 11am to 4pm

## CHRISTINGLE SERVICE Sunday 4pm

Entries invited: Individuals, families, companies/ organisations

**Decorate Any Type Of Tree**  
**Choose A Theme And Add Lights**

**Donate your Tree for Auction or Keep it!**

**Real Trees available to Order £15**

Contact: Aletia 077 393 61011 / Gill 01707 874 388

*Add a loved one to our Memory Tree*

*Seasonal Refreshments*

**Free Entry**

**Live Music**

Online Donations:  
[hartfordhundred.org.uk/donations](http://hartfordhundred.org.uk/donations)





## Are you looking for HR support you can count on?

The HR Dept offers a comprehensive HR service, providing expert advice that won't break the bank on all employment issues including contracts, recruitment, absence, management training, and disciplinary and grievance issues.

If you have a question on employment issues or need advice on legislation contact us for a FREE consultation.

**01992 721629**

E [annette.tyler@hrdept.co.uk](mailto:annette.tyler@hrdept.co.uk)

W [hrdept.co.uk/hertford-and-hatfield](http://hrdept.co.uk/hertford-and-hatfield)



Preventing People Problems

## BK Marquee Hire

For all your special events.



Free quotations and site visit.

Table and chair.

Catering, BBQs

Hog Roast

Staging and Dance Floor.

**01707 271054**

Mobile: 0796 0842998

e-mail: [bkmarqueehire@gmail.com](mailto:bkmarqueehire@gmail.com)

Web site: [bkmarqueehire.co.uk](http://bkmarqueehire.co.uk)

[facebook.com/bkmarqueehire](https://www.facebook.com/bkmarqueehire).

## Welwyn Garden City Male Voice Choir

Gentlemen, did you know singing is good for your health!

We are looking for singers. No need to be able to read music.

Please contact Bob  
07940565379

or come along to

The Methodist Church,  
Woodhall, Welwyn Garden  
City

on Thursday nights at 7.30 to  
either listen or join in

Please mention HHW Parish Magazine when responding to an advert.



Interior

-J C-

Exterior

## KEENAN DECORATING SERVICES

All aspects undertaken  
: Excellent references of  
Character & workmanship

TELEPHONE: 01707 882927 home  
07899 964 436 mobile  
john.keenan2@gmail.com



### BROWNIES, CUBS, BEAVERS AND SCOUTS

Beaver Colony - Thursday 5.30pm - 6.45pm

Cub Pack - Thursday 7.00pm - 8.30pm

Scout Troop - Monday 8.00pm—9:30pm

1st Birch Green Brownies - Monday 6.30pm - 7.45pm

Meetings are held at

Cowper Hall, Hertingfordbury Cowper Junior School, Birch Green, SG14 2LR

Website: [www.1stlettygreen.org.uk](http://www.1stlettygreen.org.uk)

### C.J.A UPHOLSTERY

- New Designs To Your Own Specification
  - Made To Measure Furniture
  - Home Visits - Portfolio Available
- Have Your Old Furniture Re-Upholstered  
Northam • 45 North Street  
Nazeing • EN9 2NH

Guaranteed Quality  
Workmanship  
1000s of Fabrics  
28 Years Experience at  
**Omega Furniture**  
[www.cjaupholstery.co.uk](http://www.cjaupholstery.co.uk)  
T: 01992 893 964  
M: 07904 359 333

Master Locksmiths and Security Engineers

## G J Locksmiths

9 The Broadway,  
Old Hatfield, AL9 5BG

**Tel: 01707 515 510**

**Mob: 07774 866333**

[www.gjlocksmithshatfield.co.uk](http://www.gjlocksmithshatfield.co.uk)  
[martin@g-j-locksmiths.co.uk](mailto:martin@g-j-locksmiths.co.uk)

Fast reliable service

**FREE surveys** to insurance or  
police specification.

phone **Martin Shadbolt**

Company member of the Master Locksmiths  
Association

## Herts Computer Services

Call Iain on **07787 157 937** or email:  
[iain@hertscomputerservices.com](mailto:iain@hertscomputerservices.com)  
**Home or small business IT support**

PC health checks & virus removal  
Broadband internet issues  
Data recovery  
Laptop repairs such as screen replacement  
PC hardware repairs & installations  
Wireless networking  
Website & internet address setup  
Microsoft server installations & small business support

**Microsoft & Comptia Certified  
Microsoft Small Business Specialist**

## Diamond Pest Control



**Diamond Pest Control** have a solution to any pest problems you may be encountering.

If you need a **wasp nest** removed or are experiencing issues with **rodents, moths, cockroaches, pigeons** or any other pests you can contact us on the number below.

**We are recruiting** for new technicians to join our team. Call us or send us your CV if you are interested!

**0208 889 1036**

[info@diamondpestcontrol.co.uk](mailto:info@diamondpestcontrol.co.uk)  
[www.diamondpestcontrol.co.uk](http://www.diamondpestcontrol.co.uk)

## BigBlackHen.com

The beautifully simple way to sell your home.

**Thinking of selling your home?**

I offer local expertise (I grew up in "Little B"), innovative marketing and personal "service" all for a low fixed fee

Call Nigel Adams on:  
**01992 878580**



[BigBlackHen.com](http://BigBlackHen.com)

## JUST FEET Foot Health.

Nail cutting, Corns, Verrucas, Thickened Nails, Split Heels, Athlete's Foot, Warts, Hard Skin, Calluses

**Mobile Foot Health  
Professional**

Deborah McLoughlin, MCFHP  
MAFHP

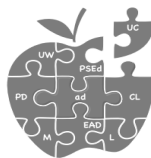
Tel: 07973 872967

e-mail:  
[d.a.mcloughlin@btopenworld.com](mailto:d.a.mcloughlin@btopenworld.com)

Please mention HHW Parish Magazine when responding to an advert.

# PRE-SCHOOL & FULL DAYCARE

appledaycare.co.uk



**apple**  
daycare Ltd

CHANGING FUTURES TODAY

appledaycare@mail.com  
Tel: 01707 872 949

Hartford Hundred West Group of Parishes



Visit the **Hartford Hundred** web site at

[hartfordhundred.org.uk/](http://hartfordhundred.org.uk/)

for full details of telephone and Zoom services

**Village Halls.**

LITTLE BERKHAMSTED

01707 875221

(Facilities for the disabled)

NEWGATE STREET

01707 874388 + online

(Facilities for the disabled)

WILD HILL 01707 642632

BAYFORD 01992 511247

BRICKENDON 01992 511551

ESSENDON 07442 499601

(Facilities for the disabled)

Personal,  
caring and  
independent.

*The complete  
funeral service*

24 hour service  
•  
Private Chapels of Rest  
•  
Bespoke Funeral Plans  
•  
Own Crematorium

STEVENAGE • 01438 316623  
HITCHIN • 01462 438422  
KNEBORTH • 01438 812365  
BUNTINGFORD • 01763 274111  
WELWYN GARDEN CITY • 01707 390018  
WELWYN • 01438 714686  
HERTFORD • 01992 582052  
WARE • 01920 468551  
LETCHEWORTH • 01462 684292  
HODDESDON • 01920 471709  
HARWOOD PARK • 01438 812515

**AUSTIN'S**

FAMILY FUNERAL DIRECTORS

[www.austins.co.uk](http://www.austins.co.uk)

*Serving the local community for ten generations*



## Harwood Park

*The perfect setting to commemorate  
the life of your loved one*



Crematorium and memorial  
gardens created and managed by  
the Austin family in the beautiful  
Hertfordshire countryside.

[www.crematorium.co.uk](http://www.crematorium.co.uk)

## MAGAZINE TEAM

### ***Editorial and Advertising***

Michael Wainwright, 12 Church Road,  
Little Berkhamsted, Hertford. SG13 8LY  
email:- parishmag@begesford.co.uk

01707 875 970

Proof readers: Judy Rennie, Sue Wainwright,

### ***Graphics***

All photographs M E Wainwright. (unless credited)

### ***Treasurer***

Peter Chivers. 53 Wildhill, Essendon, AL9 6EA  
*peterchivers53@gmail.com*

01707 642 622

### ***General Distributor***

Peter Chivers

01707 642 622

### ***Parish Distributors***

BAYFORD: Jane Honeyman, 22 Well Row, SG13 8PW

01992 511 391

BRICKENDON: John and Janet Rees, 8 Brickendon Green, SG13 8PB.

01992 511 515

ESSENDON: Shirley Christison, 24 Rectory Close, AL9 6HG,

01707 261 437

WILD HILL: Sue Horner, Butlers Mead, 3 Hornbeam Lane, AL9 6JF

07768 166 938

LITTLE BERKHAMSTED: Margery Bailey, The Tower House, Stockings Lane,  
SG13 8LW

01707 875 791

NEWGATE STREET: Angela Bryant, 29 Newgate Street Village, SG13 8RP

01707 874 805

Postal Distribution: Peter Chivers, 53 Wildhill, Essendon, AL9 6EA

01707 642 622

**Copy for the magazine, please by the**

**12<sup>th</sup> of each month,**

**or earlier if possible.**

**Please note this is the deadline for copy and not the target date.**

**Subscription rates: 80p per copy or £8 for a year.**

**Postal rates: 2<sup>nd</sup> class only £27.00**

*The Editor reserves the right to shorten or omit articles or refuse advertisements. The opinions expressed in this magazine are not necessarily those of Clergy, Editor or Publishers. The inclusion of advertisements in the magazine does not imply their endorsement by Clergy, Editor or Publishers.*

Please mention HHW Parish Magazine when responding to an advert.



Pepper  
& Phillips

J.J.  
**BURGESS**  
& Sons

**Collins**  
Funeral Services

Independent Family Funeral Directors  
Established 1839

Personal Service Pre-Paid Funerals Bespoke Funerals

**0800 174220**

[www.jjburgess.co.uk](http://www.jjburgess.co.uk)



Register of Qualified  
**RQMF**  
MEMORIAL FIXERS

**BRAMM**  
IMPROVING STANDARDS

**BURGESS**  
**MEMORIALS**

Independent Family Monumental Masons  
Established 1839



CLEANING · RESTORING · NEW MEMORIALS

**01707 241781**



AH  
**NICHOLLS**  
& SONS LTD



## Hard Landscaping & Fencing Supplies



Fencing | Aggregates |  
Blocks & Kerbs | Porcelain  
Paving & Natural Indian  
Sandstone | Mixed Concrete  
| Grab Lorry Services.

01992 462035

Etteridge Farm Depot  
Pembroke Lane  
Broxbourne  
Hertfordshire  
EN10 7QP



Discover two very different golf courses situated in a picturesque 450-acre estate, which provides an idyllic backdrop for one of the most welcoming and progressive golf clubs in England.

## A MODERN CLUB IN A TRADITIONAL SETTING



ESSENDON  
COUNTRY CLUB

01707 260 360  
[www.essendoncc.co.uk](http://www.essendoncc.co.uk)